

Western
Carolina
UNIVERSITY

Highlands Biological
Station



HIGHLANDS
BIOLOGICAL STATION

A Multi-Campus Center of Western Carolina University
Founded 1927

Amazon River Adventure

EXPLORING PERU'S RAINFOREST WONDERS

March 23-30, 2025

4 NIGHTS ABOARD
DELFIN III

OPTIONAL
POST-TOUR EXTENSION
MACHU PICCHU



“Nothing can be more improving to a young naturalist, than a journey in distant countries”

—Charles Darwin, *Voyage of the Beagle*

JOIN HBS FOR AN EXTRAORDINARY ADVENTURE

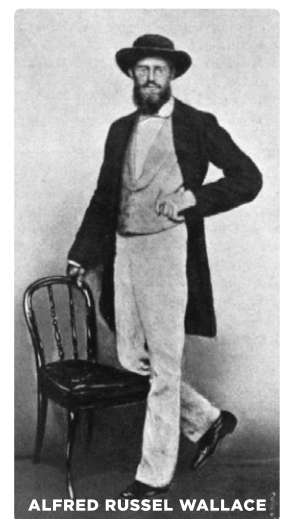
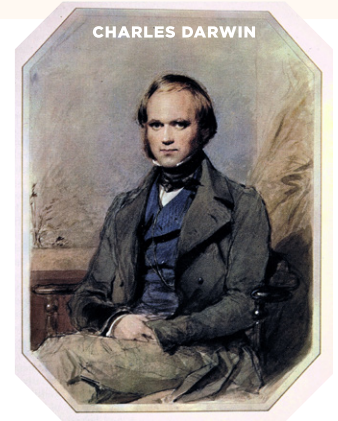
from the coast of Peru to the heart of the headwaters of the Amazon River on the exquisite *Delfin III*—a Relais & Chateaux luxury riverboat. Our trip begins with two nights in Lima, where Charles Darwin visited in August 1835 aboard HMS *Beagle* en route to the Galápagos Islands. Our Lima visit includes a full day tour acquainting us with the historic city center where we will learn about the city’s colonial past as well as the ancient Inca, a people, Darwin marveled, “considerably advanced in civilization.”

From Lima, we’ll fly to Iquitos, the gateway to the Amazon, and embark on our 5-day river cruise exploring the Upper Amazon of Peru. As we navigate majestic rivers and lush tributaries, we’ll be treated to the comforts of well-appointed suites and panoramic views from the ship’s observation deck. This is the great American tropical realm explored by Alfred Russel Wallace, Henry Walter Bates, Richard Spruce, and other explorer-naturalists of the 18th and 19th centuries. It was here in Amazonia that Wallace formulated his first evolutionary theories, Bates discovered the remarkable form of butterfly color pattern mimicry now known as Batesian Mimicry, and Richard Spruce studied the indigenous cultivation of the Cinchona tree, the bark of which yields the anti-malarial drug quinine—Spruce’s exported seeds and young plants later saved untold millions of lives.

Flowing through over half of the planet’s remaining rainforest from the Andes to the Atlantic, the Amazon River is the lifeblood of an astonishing ecosystem. The 8,042-square-mile Pacaya Samiria National Reserve of Peru is home to the headwaters of the Amazon, with its dense *terra firme* (dry ground) forest and the amazing *várzea*, seasonally flooded forest where great fish swim through submerged canopies of lofty trees, replacing birds and mammals as the primary dispersers of fruits and seeds.

This haven is a sanctuary for an incredible array of wildlife, from elusive jaguars (*Panthera onca*) and frolicking pink river dolphins (*Inia geoffrensis*) to exotic flora and nearly 500 bird species. Meandering through the labyrinthine waterways in the Yanallpa area, we’ll immerse ourselves in a verdant landscape where the jungle hums with life. We’ll travel deep into the heart of the reserve to visit a vast expanse of lakes, palm swamps, and streams, as well as a pristine Amazon lagoon. Each day will begin early to maximize our time exploring, from naturalist-guided jungle hikes to wildlife viewing, birdwatching expeditions, and visits to local communities along the Yarapa River and its tributaries.

This itinerary promises an unforgettable exploration of one of the world’s most biodiverse regions, blending history of science and exploration with a celebration of cultural and natural history. From cruising the Amazon to walking through Lima’s historic streets, every moment will be an opportunity to create lasting memories. Don’t miss this chance to experience the best of Peru’s natural and cultural treasures. Book your journey today and prepare for an adventure that will captivate your senses and inspire your spirit.



STUDY LEADER

Your study leader is DR. JAMES (JIM) COSTA, 20-year executive director of the Highlands Biological Station and professor of biology at Western Carolina University where he teaches biogeography, Darwin and the Origin of Species, and, with WildSumaco Biological Station in Ecuador, a comparative temperate-tropical ecology field course. Jim has written

extensively on the explorer-naturalists Charles Darwin and Alfred Russel Wallace, co-discoverers of evolution by natural selection, and has traveled throughout South America in their footsteps. He has authored 10 books, including *The Annotated Origin* (Harvard, 2009), *Darwin, Wallace, and the Origin of Species* (Harvard, 2014),

Radical by Nature: The Revolutionary Life of Alfred Russel Wallace (Princeton, 2023), and most recently *Darwin and the Art of Botany* (Timber, 2023). Recipient of the Wallace Medal and the Stephen Jay Gould Prize, Jim is a Trustee of the London-based Charles Darwin Trust and has been awarded fellowships at Harvard’s Radcliffe Institute for Advanced Study, the Berlin Institute for Advanced Study, the LuEsther T. Mertz Library of the NY Botanical Garden, the University of Toulouse, and the DFG-Centre for Advanced Study at the University of Hamburg. For many years he co-instructed Harvard’s summer program on Darwin and evolution at Oxford University, and is a long-time research associate of the Museum of Comparative Zoology at Harvard and study leader/lecturer for the Harvard Alumni Association Travel Program.



MARCH 23 | Sunday

USA 🌿 LIMA

We'll arrive in the evening at Jorge Chávez International Airport in Callao, Lima. Upon arrival, we'll be greeted and transferred to our hotel. **DOUBLETREE BY HILTON LIMA MIRAFLORES EL PARDO (MEALS ALOFT)**

MARCH 24 | Monday

LIMA, PERU

This morning, we'll take a panoramic tour of Lima's residential areas including Miraflores, with its Central Park, scenic cliffs facing the Pacific Ocean, and the *Huaca Pucllana*—an ancient Peruvian pyramid, as well as upscale San Isidro with its famed Olive Grove Forest. We'll continue to the historic center to see San Martin Square, Plaza Mayor, the Cathedral, and the Government and Archbishop Palaces, before continuing to Pueblo Libre district for lunch at Museo Larco Café Restaurant. In the afternoon, we'll visit the Larco Museum, which contains a fascinating collection of pottery vessels, unique gold and silver work, and ceramics from pre-Inca civilizations. This evening, we'll gather for a welcome dinner. **DOUBLETREE BY HILTON LIMA MIRAFLORES EL PARDO (B, L, D)**

MARCH 25 | Tuesday

LIMA 🌿 IQUITOS 🌿 NAUTA 🌿 EMBARKATION DELFIN III

Following breakfast, we'll transfer to the airport for our flight to Iquitos. Upon arrival, our crew will transfer us to the port of Nauta, where we'll enjoy a VIP greeting at our private port along the shores of the Marañon River where our luxury vessel

awaits us. As the *Delfin III* begins its initial navigation, we'll enjoy panoramic views from the observation area on the third deck, while our naturalist guide will provide an overview of the journey's schedule, activities, route, and highlights, as well as going over important geographical and historical information. This evening, we'll enjoy a documentary at the indoor lounge: *Rivers of the Sun*. **NOTE: SCHEDULES OF ACTIVITIES ON THE DELFIN III ARE SUBJECT TO CHANGE DUE TO WEATHER AND RIVER CONDITIONS, ALWAYS KEEPING PASSENGERS' BEST INTERESTS IN MIND. ARRIVAL AND DEPARTURE TIMES MAY ALSO VARY DUE TO CHANGES MADE TO THE RECOMMENDED FLIGHTS BY THE AIRLINE. DELFIN III (B, BL, D)**

MARCH 26 | Wednesday

PERUVIAN AMAZONIA

We'll explore the Yanallpa area in the Amazon Rainforest, where the early morning hours offer the best opportunities to watch for birds and other wildlife. We'll jump on skiffs and head to the shores of the Ucayali River. This area is green with large palms and

broadleaf trees, which favor the presence of several parrot species. We may spot stunning metallic-blue Morphos, one of the largest butterflies in the world, flocks of scarlet macaws (*Ara macao*), and various raptors, woodpeckers, and swallows. We're likely to hear the loud and distinctive calls of blue & yellow macaws (*Ara ararauna*) before we see these spectacular birds, and in the Dorado River we'll look for the famed hoatzins (*Opisthocomus hoazin*), large evolutionarily "primitive" birds that bear claws on their wings, and feed on leaves. The Dorado River is also home to troops of brown capuchin and squirrel monkeys, as well as sloths. As the sun sets, we'll look for black and white caimans, fishing bats, noisy night monkeys, and fireflies. **DELFIN III (B, L, D)**



HARPY EAGLE
© TOM FRIEDEL



CAPUCHIN MONKEY

MARCH 27 | Thursday

PERUVIAN AMAZONIA

Today we'll journey to the heart of the Pacaya Samiria National Reserve, Peru's largest protected area, known for its high annual rainfall and vast expanse of lakes, palm swamps, and streams. This biodiversity hotspot is a classic várzea flooded forest in the rainy season, and arguably one of the most beautiful places we'll visit. We'll spend time at one of the pristine Amazon lagoons in this wonderful region, where we can admire in its native habitat the giant water lily (*Victoria amazonica*)—the *Atun Sisac* ("great flower") of the Inca—and seek out Amazonian manatees (*Trichechus inunguis*), harpy eagles (*Harpia harpyja*), and cobalt-winged parakeets (*Brotogeris cyanoptera*).
DELFIN III (B, L, D)

MARCH 28 | Friday

PERUVIAN AMAZONIA

Today we'll explore the Yarapa River and its tributaries. As we travel downriver to this wide creek that leads to an attractive

hidden lagoon, we'll have the chance to reflect on the beauty of the landscape and the diverse wildlife, including hawks, terns, herons, and monkeys. In this area, we'll notice many more inhabitants of the Amazon, the *rivereños*. People being an important part of this complex ecosystem reinforces the fact that our presence here could make a difference to the future of this remarkable land of the Incas. We'll look out for such monkeys as pygmy marmosets (*Cebuella* spp.), squirrel monkeys (*Saimiri* spp.), and the remarkable monk saki (*Pithecia monachus*), a species studied by renowned naturalist Alfred Russel Wallace as he formulated his famed Riverine Barrier Hypothesis. On board our skiffs, we'll visit a community to meet local villagers who have called Amazonia their home for generations. We may step into a typical schoolhouse where the children will be excited to greet visitors, and then stop by an area to see the women of this community who have a most amazing arts & craft market. Later, a walk at Fundo Casual jungle trail will take us deep into the rainforest on *terra firme* (non-flooded) forest, where our guides will help

us identify Amazonian flora and fauna. We'll keep an eye out for surprises like anacondas, rainbow boas, tarantulas, poison dart frogs, and porcupines. This is one of the few places in the Pacaya Samiria National Reserve where we may spot elusive *Choloepus* two-toed sloths. DELFIN III (B, L, D)

MARCH 29 | Saturday

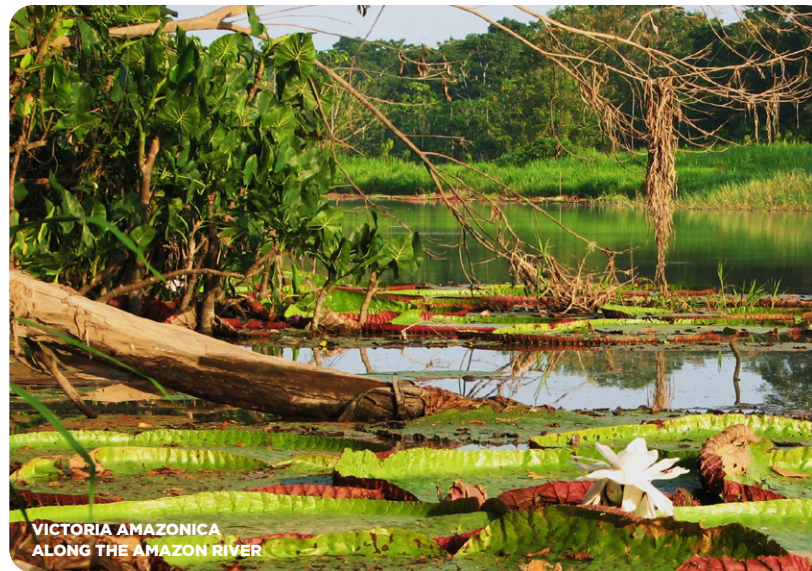
DELFIN III 🌿 NAUTA 🌿 IQUITOS 🌿 LIMA 🌿 USA

We'll disembark in Nauta and transfer to Iquitos. On our way, we'll visit the Rescue & Rehabilitation Center for River Mammals (www.centroderescateamazonico.com/). Later, we'll transfer to the airport for our flight to Lima, where we'll receive airport assistance for connecting overnight flights to the USA or to our optional trip extension to Machu Picchu. (B)

MARCH 30 | Sunday

USA

Arrive in the USA in the morning. (MEALS ALOFT)





MACHU PICCHU

OPTIONAL POST-TOUR EXTENSION

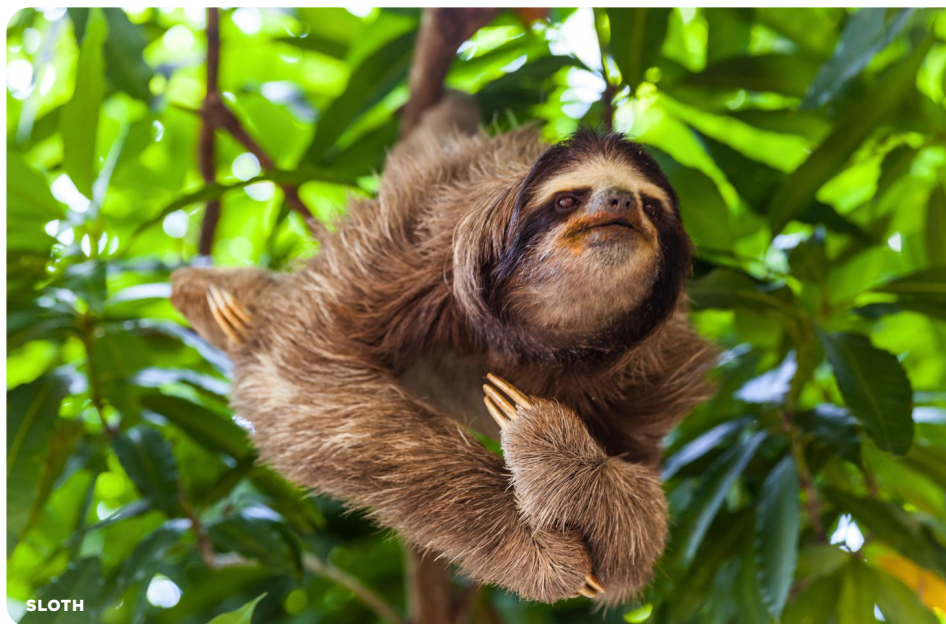
MACHU PICCHU

March 29–April 4, 2025

Discover the breathtaking Lost City of the Inca, Machu Picchu. After our morning flight to Cusco, the capital city of the Inca Empire, we transfer to the lovely town of Yucay in Urubamba Valley. We will overnight in Yucay, which is located at a lower elevation, to allow for an easier acclimatization. On our journey to Yucay, we'll explore Awanacancha, a weaving center dedicated to preserving traditional textile arts. Here, we'll see llamas, alpacas, vicuñas, and guanacos, and learn about wool harvesting and natural dyeing techniques. In the afternoon, we'll stop at the colorful native market in Pisac. The next day a dramatic train ride through the Urubamba Valley takes us to the enchanting and mystical site of Machu Picchu. Here we'll overnight at the El MaPi by Inkaterra Hotel. On our return we spend two nights in Cusco, where we'll absorb a colorful mix of past and present. This five-night, six-day post-tour extension (one night in Lima at the Costa del Sol Wyndham Lima Airport hotel and four nights in the highlands) includes first-class accommodations; all excursions; five breakfasts, two lunches and three dinners; air transportation Lima/Cusco and Cusco/Lima; airport taxes; airport-to-hotel transfers; and the services of a Peruvian guide. The extension is based on a minimum of 6 travelers.



AMAZON RIVER DOLPHIN



SLOTH



HELICONIA FLOWERS



SCARLET MACAW



RESTAURANT

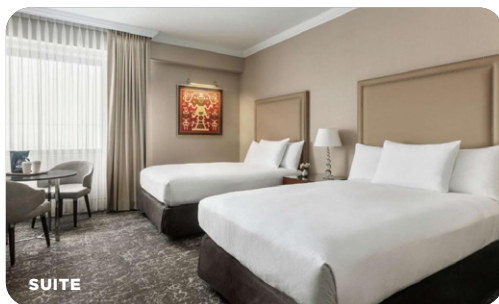
ACCOMMODATIONS (MAIN PROGRAM)

**DOUBLETREE BY HILTON,
LIMA MIRAFLORES EL PARDO**

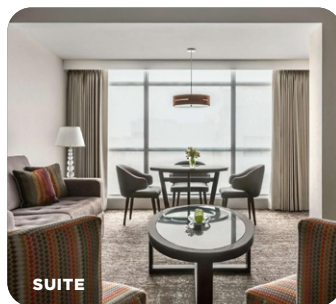
This contemporary 10-story hotel is located in the cosmopolitan area of Miraflores in Lima. With its convenient location, guests have easy access to the area's attractions, shopping, and dining options, making it an ideal choice for leisure travelers. The property features a range of amenities including a well-equipped fitness center, offering Crossfit, yoga and spin classes, a heated pool with panoramic views, and a gourmet restaurant serving a variety of international cuisines. Enjoy cocktails and city views from the cafe's terrace, and Doubletree's signature warm chocolate chip cookie when you arrive.



CAFE



SUITE



SUITE



POOL



OWNER'S SUITE

DELFIN III

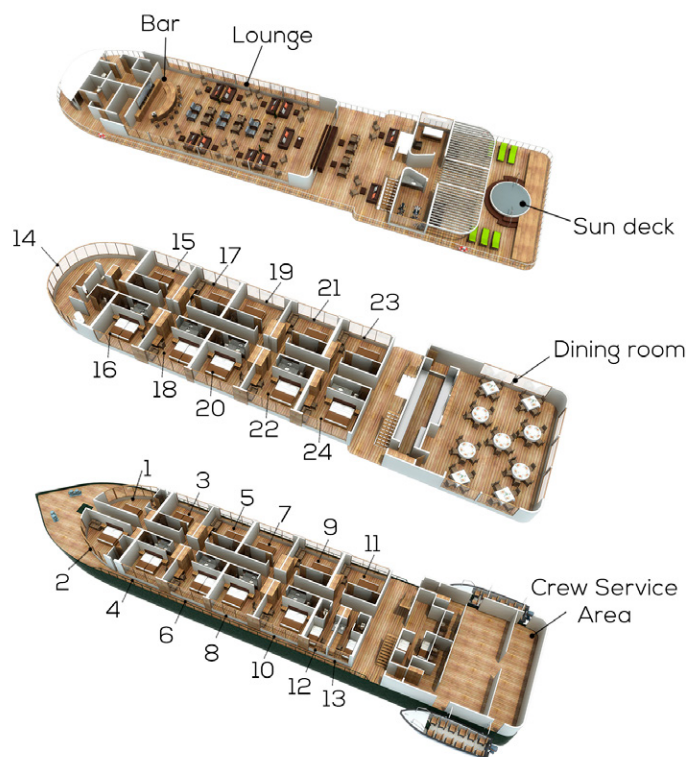
This luxury Relais & Châteaux cruise makes it the perfect getaway to the Upper Peruvian Amazon. The *Delfin III* offers 22 suites with the highest levels of comfort for up to 44 passengers. On the first deck, there are 9 Suites complete with floor-to-ceiling panoramic windows as well as 2 spacious Corner Suites facing the front of the ship. The second deck is comprised of 10 Upper Suites and the largest of all, the Owner's Suite. The top deck features beautiful indoor and outdoor lounge areas, a sundeck with plunge pool, a spa and gym, and of course the bar.



LOUNGE



SUN DECK





PC 2

WHAT TO EXPECT

We will be traveling in Amazonia during the flooded season, and the average temperature is 86 degrees Fahrenheit, 12 degrees cooler than in the dry season. During this time, the rivers and streams are about 23 feet higher, meaning that every river, creek and lake is navigable. You will get to explore more of the waterways of Amazonia, and will have access to plant life and wildlife areas that you might miss during the dry season. A shore excursion can be anything from exploring remote tributaries to spotting monkeys and birds along a jungle trail, or from visiting a local village to fishing on one of Amazonia's beautiful lakes. They vary in level of difficulty, but most travelers who are reasonably fit will have no trouble participating in every excursion. While most excursions involve "dry" landings, some require "wet" landings, where you will have to step into shallow water and then wade to shore. Your guide and skiff driver will assist you, and rubber boot rentals are provided. Waterproof ponchos with hoods will be provided to protect against rain. When the excursions are in the Pacaya Samiria National Reserve, you will follow marked trails, walking at a leisurely pace for up to 1 hour. Guests should be in good physical health in order to be able to make the most of their Amazon cruise. The daily nature excursions may include walking on irregular terrain and getting in and out of the skiffs, occasionally requiring some physical effort. We recommend taking comfortable walking shoes for walking on the dry paths.

PROGRAM COST INCLUDES

- Round trip in-tour airfare Lima>Iquitos and Iquitos>Lima, not to exceed \$420 per person
- Tips to the *Delfin III* crew is included
- All excursions included aboard the *Delfin III*
- Gratuities to local guides, drivers, and waiters at included meals
- All accommodations and meals as specified in the itinerary
- Wine with all dinners
- Wine with lunches and dinners while aboard *Delfin III*
- English-speaking Tour Director throughout
- Program of lectures with Study Leader and HBS Executive Director Dr. James Costa
- All activities and entrance fees per the itinerary
- All transportation during the program
- Service charges and taxes
- 16 Total meals: 6 Breakfasts, 5 Lunches, 5 Dinners
- Pre-departure information
- Coordination and Administration
- Baggage handling

PROGRAM COST

(per person)

MAIN PROGRAM, Regular Suite

Double Occupancy **\$7,690**
 Single Occupancy **\$9,850**

MAIN PROGRAM, Upper Suite

Double Occupancy **\$8,290**
 Single Occupancy **\$10,690**

MACHU PICCHU

POST-TOUR EXTENSION

Double Occupancy **\$2,950**
 Single Occupancy **\$3,390**

SAMPLE COACH INTERNATIONAL AIRFARE

ATLANTA>LIMA>ATLANTA.....\$1,149

(Not included, quoted separately, subject to change)

AIRFARE: International airfare roundtrip between Atlanta, Georgia and Lima, Peru is not included. Estimated airfare is approximately \$1,149 (coach class) as of August 2024. Airfares are subject to change. A recommended flight itinerary will be made available to registered passengers departing and returning from Atlanta.

PROGRAM COST DOES NOT INCLUDE

- U.S. domestic and international airfare (quoted separately)
- Any increases in the in-tour airfare (included as part of the program cost)
- Excess baggage charges
- Meals not specified in the itinerary
- Personal items such as laundry, email, fax, or telephone calls
- Alcoholic beverages except those mentioned above
- Dishes or beverages not included with meals
- Room service
- Passport and visa fees
- Private transfers
- Medical expenses
- COVID testing or quarantine expenses
- Travel insurance
- Optional extensions or deviations from the scheduled tour
- Airport and departure taxes and/or security fees
- Fuel surcharges
- Tip to the Tour Director is not included and is at the passengers' discretion

TERMS & CONDITIONS

RESERVATIONS, DEPOSITS, & FINAL PAYMENT:

To reserve a space on this program, a \$1,000 deposit, along with \$200 for the post-trip extension, if applicable, is required per person. Please either mail, email, or fax your registration form. If you wish to submit your registration online, please visit royaladventures.intellibook.co/site/#/hbs-peru-25 or scan the QR code above with your smartphone camera. Initial deposits may be charged to a credit card. A 3% credit card processing fee will apply. Final payment is due December 5, 2024, and must be paid by check or wire transfer only. Royal Adventures handles all invoicing. CST #2009579-40.

CANCELLATIONS AND REFUNDS: Royal Adventures must receive all cancellations in writing. The initial deposit is fully refundable until November 4, 2024. Cancellations between November 5, 2024, and December 5, 2024, are subject to a \$1,000 per person cancellation fee. There are **no refunds** after December 5, 2024. There are no refunds for unused meals, accommodations, or other trip features.

TOUR SIZE: This tour is exclusively designed for Western Carolina University/Highlands Biological Station members and friends on a first-come, first-served basis. The minimum group size is 15. Should the minimum not be met, we reserve the right to levy a small group surcharge.

TRAVEL INSURANCE: We strongly recommend the purchase of trip cancellation insurance as the cancellation penalty in this brochure will apply. Trip cancellation insurance can be purchased through our recommended provider Travel Insured International. [CLICK HERE](#) to get a quote or call 1-800-243-3174 and mention Royal Adventures #53140. Most insurance plans need to be purchased within 14 days of paying the initial deposit in order to waive pre-existing medical conditions as well as to purchase "Cancel for Any Reason" insurance. Neither Western Carolina University/Highlands Biological Station nor Royal Adventures accept liability for any airline cancellation penalty incurred by the purchase of a non-refundable airline ticket or other expenses incurred by tour participants in preparing for the trip.

QUESTIONS: Please email Jim Costa (costa@email.wcu.edu) or phone: (828) 526-2602. Or contact Royal Adventures at (925) 820-6260 ext 117 or 1-800-453-4754 ext 117 or email: sil@royaladventures.com.

RESPONSIBILITY: Royal Adventures, its owners, and employees act only as agents for the various independent suppliers and contractors providing transportation, hotel accommodations, restaurant, and other services connected with this tour. Such travel and services are subject to the terms and conditions under which such accommodations, services, and transportation are offered or provided, and the Highlands Biological Station/Western Carolina University and Royal Adventures and their respective employees, agents, representatives, and assigns, accept no liability, therefore. The Highlands Biological Station/Western Carolina University and Royal Adventures assume no liability for any injury,

damage, loss, accident, delay, or other irregularity that may be caused by the defect of any aircraft or vehicle or the negligence or default of any company or person engaged in carrying out or performing any of the services involved. Additionally, responsibility is not accepted for losses, injury, damages, or expenses of any kind due to sickness, epidemics, pandemics, pathogens, weather, strikes, local laws, hostilities, wars, terrorist acts, acts of nature, quarantine, force majeure, animal or insect bites, or other such causes. All services and accommodations are subject to the laws of the country in which they are provided. If this tour is canceled due to a force majeure event or other forces beyond our control, only the recoverable portion of unused services or accommodations, if any, will be refunded or credited on a future Royal Adventures tour. A force majeure event, in relation to this tour, shall mean any circumstances beyond our control, including, but without limitation, to acts of God, explosion, flood, forceful wind, fire or accident, war or threat of war declared or undeclared, acts of terrorism, sabotage, insurrection, riots, strikes, civil disturbance, sickness, epidemics, pandemics, quarantines, government intervention or other unforeseeable events. Limitations on travel arising from the COVID-19 pandemic or other pathogens shall be considered a force majeure event. Highlands Biological Station/Western Carolina University and Royal Adventures reserve the right to make changes in the published itinerary or to the trip leaders whenever, in their sole judgment, conditions warrant, or if they deem it necessary for the comfort, convenience, or safety of the tour participants. They reserve the right to withdraw this tour without penalty. The right is also reserved to decline to accept or retain any person as a member of the tour or to substitute another qualified leader or special guest. Baggage and personal effects are the sole responsibility of the owners at all times. The price of the program is given in good faith based on current tariffs and rates and is subject to change. Any tariff, exchange rate, airfare, or fuel increases will be passed onto participants. Neither the Highlands Biological Station/Western Carolina University nor Royal Adventures accepts the liability for any airline cancellation penalty incurred by the purchase of a nonrefundable airline ticket. The air ticket when issued shall constitute the sole contract between the passenger and the airline concerned. There are no refunds for unused meals, accommodations, or other trip features. I will not hold the Highlands Biological Station/Western Carolina University nor Royal Adventures and/or its employees or agents responsible for any expense or loss caused by my/ our failure to purchase trip cancellation and evacuation insurance coverage. As part of the consideration and right to participate in this tour, each participant will be asked to sign a liability release, assumption of risk, and hold harmless agreement.



Amazon River Adventure

4 NIGHTS ABOARD *DELFIN III*

MAIN TOUR
March 23-30

MACHU PICCHU
EXTENSION
March 29-
April 4

For the ease of registering online, please visit royaladventures.intellibook.co/site/#/hbs-peru-25

If you prefer to mail your registration, please complete the form below and return it to Royal Adventures with deposit check (if applicable) payable to "Royal Adventures" at: **Royal Adventures, 9 Crow Canyon Ct, Ste 205, San Ramon, CA 94583.** Fax to (925) 855-1909.

Enclosed is my deposit of \$ _____ \$1,000 per person to hold _____ place(s) on *Amazon River Adventure*, plus \$200 for the *Machu Picchu extension*, if applicable, departing March 23, 2025, with Highlands Biological Station. **Final payment is due December 5, 2024, and must be paid by check or wire transfer.**

NAME AS ON PASSPORT _____ DATE OF BIRTH _____

NAME AS ON PASSPORT _____ DATE OF BIRTH _____

STREET ADDRESS _____

CITY / STATE / ZIP _____

E-MAIL(S) _____

CELL PHONE _____

HOME PHONE _____ OFFICE PHONE _____

Payment Options

- Pay by check made out to "**Royal Adventures**"
- Please charge the deposit of \$ _____ (plus 3% credit card processing fee) to: AMEX VISA MasterCard Discover

CARD NUMBER _____

EXP DATE _____ SEC CODE _____

Accommodations

- Double 1 Bed Double 2 Beds Single (limited availability)
- I am sharing accommodations with _____ (reservation form sent separately)
- Aboard *Delfin III*: Regular Suite Upper Suite

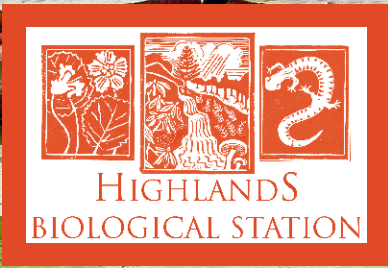
Extension

- I/We wish to join the *Machu Picchu* optional extension

I/We have carefully read the Terms and Conditions and Responsibility sections of this brochure and agree to their terms on behalf of myself and the members of my party named above.

SIGNATURE _____ DATE _____

SIGNATURE _____ DATE _____



Amazon River Adventure

EXPLORING PERU'S RAINFOREST WONDERS

March 23-30, 2025



ZEBRA BUTTERFLY

4 NIGHTS ABOARD
DELFIN III

OPTIONAL
POST-TOUR EXTENSION
MACHU PICCHU

HIGHLIGHTS

Explore the vibrant city of Lima

Experience the enchantment of the Amazon

Delve into unspoiled rainforest

Encounter indigenous communities

Witness Amazon wildlife up close

Learn from a program of informative lectures with Dr. James Costa